

USER MANUAL



Scan to Get More Languages

BK467-RTN-11-2150

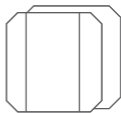


All About Passion

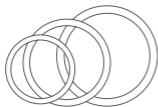
Standard Accessories



Speed / Cadence
Sensor x 1



Rubber Mat
(Flat x 1, Curved x 1)



Band
(Large x 2, Medium x 2,
Small x 2)

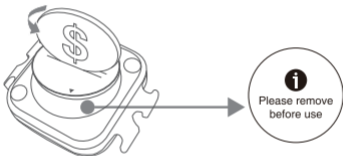


User Manual x 1

Product Introduction

BK467 measures speed or cadence in real time and it sends speed or cadence data to app or bike computer. This user manual will help you to use the product better, please keep it for reference.

Remove the Insulation Sheet



1. Twist the battery cover with a coin in OPEN direction, open the battery cover, remove the battery

2. Take out the insulating sheet

Function and Operation

BK467 has speed mode and cadence mode. You can switch the mode by rebooting.

Mode switching

- a** Twist the battery cover with a coin in OPEN direction, open the battery cover, remove the battery and install it again, after that, twist the battery cover in CLOSE direction, close the battery cover.



- b** After the battery installed, there will be a light on. Red light indicates speed mode, and blue light indicates cadence mode.



Installation

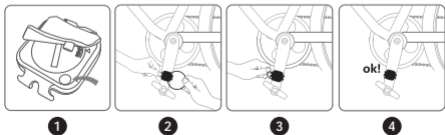
a Installation for speed mode

Buckle the curved rubber mat onto the back of the sensor, then bind the sensor with the large rubber band onto the wheel axle.



b Installation for cadence mode

Buckle the flat rubber mat onto the back of the sensor, then bind the sensor with the small rubber band onto the pedal crank.



Specifications

Weight	9.5 g
Battery Life	300 hours
Battery Type	CR2032 220mAh
Waterproof	IP67
Wireless	Bluetooth & ANT+
Size	41 x 34 x 10 mm
Max Speed	120 km/h
Max Cadence	300 rpm
Working Temperature	-10°C ~ 50°C
Color	Black

Applicable Smart Phones



iOS 7.0 or above, iPhone 4s model or above



Android 4.3 or above with Bluetooth 4.0

Compatible Apps

CoospoRide, Wahoo, Openrider, Zwift, MAP MY RIDE+, or other Apps with speed/cadence feature.

Disclaimer

- The information contained in this manual just for reference. The product described above may be subject to alteration owing to the manufacturer's continuing research and development plans, without making an announcement in advance.
- We shall not make any statement or warranty about this manual.

FCC statement

This equipment has been tested and found to comply with the limits for a Class B digital device, pursuant to part 15 of the FCC Rules. These limits are designed to provide reasonable protection against harmful interference in a residential installation. This equipment generates uses and can radiate radio frequency energy and, if not installed and used in accordance with the instructions, may cause harmful interference to radio communications. However, there is no guarantee that interference will not occur in a particular installation. If this equipment does cause harmful interference to radio or television

reception, which can be determined by turning the equipment off and on, the user is encouraged to try to correct the interference by one or more of the following measures:

- Reorient or relocate the receiving antenna.
- Increase the separation between the equipment and receiver.
- Connect the equipment into an outlet on a circuit different from that to which the receiver is connected.
- Consult the dealer or an experienced radio/TV technician for help.

Changes or modifications not expressly approved by the party responsible for compliance could void the user's authority to operate the equipment.

This device complies with Part 15 of the FCC Rules. Operation is subject to the following two conditions:

- 1 this device may not cause harmful interference, and .
- 2 this device must accept any interference received, including interference that may cause undesired operation.



Waste electrical products should not be disposed of with household waste. Please recycle where facilities exist. Contact your local government or a retailer for additional information.



- Do not open or modify the product.
- Do not disassemble or attempt to service this product.
- This product is safe under normal and reasonably foreseeable operating conditions.
- If product is operating improperly, call COOSPO support.
- Product must be returned to the manufacturer for any service or repair.